

Test Report

Report No.: CTT170230735EN

Date: Feb. 17, 2017

Page 1 of 3

Applicant: GOYA IMPORTACIONES Y DISTRIBUCIONES S.L.

Address: PLATAFORMA LOGISTICA DE ZARAGOZA C/TRAPANI 27 EDIFICIO 50197 SPAIN

The following merchandise was (were) submitted and identified by client as:

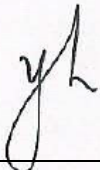
Sample Name: SPLITTER
Model No.: 37073
Sample Received Date: Feb. 16, 2017
Completed Date: Feb. 17, 2017

Test Result(s): Please refer to next page(s).

Test Requested and Conclusion(s):

No.	Test Sample	Standard and Requirement	Conclusion(s)
1	Tested materials of submitted samples	RoHS Directive 2011/65/EU and its subsequent amendments	PASS

Signed for and on Behalf of CTT



Yuhu / Lab supervisor

Consumer Testing Technology Co., Ltd.

This test report is issued by the company subject to its General Conditions of Services printed overleaf or available on request and accessible at www.cttlab.com. Attention is drawn to the limitations of liability, indemnification and jurisdictional issues defined therein. Unless otherwise stated the results shown in this report refer only to the sample(s) tested. Without prior written permission of the company, this test report cannot be reproduced, except in full. Items marked with "n" or "m" means they are not accredited by CNAS or CMA. "s" means the item of subcontractor is not accredited by CNAS or CMA.

Test Report

Report No.: CTT170230735EN

Date: Feb. 17, 2017

Page 2 of 3

Test Result(s):

RoHS - Lead (Pb)/Cadmium(Cd)/Mercury(Hg)/Hexavalent Chromium(Cr⁶⁺)/PBBs/PBDEs

Method:

With reference to IEC 62321-3-1:2013, screening by EDXRF Spectroscopy.

Lead (Pb)/Cadmium(Cd) - With reference to IEC 62321-5: 2013, analyzed by AAS & ICP-AES.

Mercury(Hg) - With reference to IEC 62321-4: 2013, analyzed by AAS & ICP-AES.

Hexavalent Chromium(Cr⁶⁺) - With reference to IEC 62321: 2008, analyzed by UV-Vis.

PBBs/PBDEs - With reference to IEC 62321-6: 2015, analyzed by GC-MS.

Material No.	Substances	ⁿ EDXRF Result *	Chemical Result #(mg/kg)	Conclusion
1	Pb	BL	--	PASS
	Cd	BL	--	PASS
	Hg	BL	--	PASS
	Cr ⁶⁺	BL	--	PASS
2	Pb	BL	--	PASS
	Cd	BL	--	PASS
	Hg	BL	--	PASS
	Cr ⁶⁺	BL	--	PASS
	PBBs	BL	--	PASS
	PBDEs		--	PASS

- Note:**
1. mg/kg = milligram per kilogram (ppm).
 2. N.D. = Not Detected (<RL).
 3. RL(Reporting Limit): 2 mg/kg for Pb/ Cd/ Hg/ Cr⁶⁺(Nonmetal material); 5 mg/kg for PBBs & PBDEs.
 4. Negative = Absence of Cr⁶⁺.
 5. Positive = Presence of Cr⁶⁺: the detected concentration in boiling-water-extraction solution is equal or greater than 0.02 mg/kg with 50 cm² sample surface area.
 6. "*" = It is the result on total Cr and Br while test substances are Cr⁶⁺ and PBBs & PBDEs.
 7. "#" = Result are obtained by EDXRF for primary screening, if the result exceeds the below limit (BL), and further chemical testing.

This test report is issued by the company subject to its General Conditions of Services printed overleaf or available on request and accessible at www.cttlab.com. Attention is drawn to the limitations of liability, indemnification and jurisdictional issues defined therein. Unless otherwise stated the results shown in this report refer only to the sample(s) tested. Without prior written permission of the company, this test report cannot be reproduced, except in full. Items marked with "n" or "m" means they are not accredited by CNAS or CMA. "*" means the item of subcontractor is not accredited by CNAS or CMA.



Test Report

Report No.: CTT170230735EN

Date: Feb. 17, 2017

Page 3 of 3

Screening limits in mg/kg for regulated elements in various matrices

Elements	Polymer	Metal	Composite Materials
Pb	$BL \leq (700-3\sigma) < X < (1300+3\sigma) \leq OL$	$BL \leq (700-3\sigma) < X < (1300+3\sigma) \leq OL$	$BL \leq (500-3\sigma) < X < (1500+3\sigma) \leq OL$
Cd	$BL \leq (70-3\sigma) < X < (130+3\sigma) \leq OL$	$BL \leq (70-3\sigma) < X < (130+3\sigma) \leq OL$	$LOD < X < (150+3\sigma) \leq OL$
Hg	$BL \leq (700-3\sigma) < X < (1300+3\sigma) \leq OL$	$BL \leq (700-3\sigma) < X < (1300+3\sigma) \leq OL$	$BL \leq (500-3\sigma) < X < (1500+3\sigma) \leq OL$
Cr	$BL \leq (700-3\sigma) < X$	$BL \leq (700-3\sigma) < X$	$BL \leq (500-3\sigma) < X$
Br	$BL \leq (300-3\sigma) < X$	--	$BL \leq (250-3\sigma) < X$

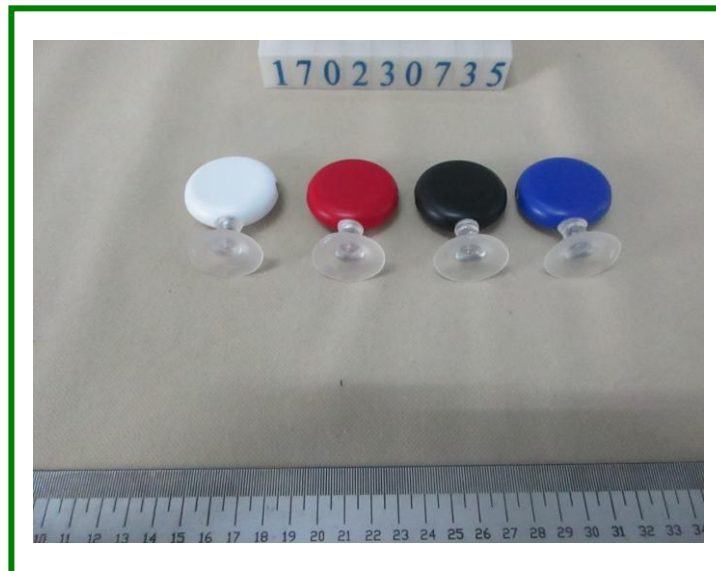
BL = Below Limit, OL = Over Limit, IN = Inconclusive, LOD = Limit of Detection

Test Material List:

The following materials apply only to the samples submitted for chemical testing

Material No.	Description	Location
1	Silvery plating metal	Plug
2	White plastic	Wafer

Photo of Sample:



End of Report

This test report is issued by the company subject to its General Conditions of Services printed overleaf or available on request and accessible at www.cttlab.com. Attention is drawn to the limitations of liability, indemnification and jurisdictional issues defined therein. Unless otherwise stated the results shown in this report refer only to the sample(s) tested. Without prior written permission of the company, this test report cannot be reproduced, except in full. Items marked with "n" or "m" means they are not accredited by CNAS or CMA. "s" means the item of subcontractor is not accredited by CNAS or CMA.